

Sibylle Kramer | Iris van Hülst

INSIDE

INTERIORS OF
CONCRETE STONE WOOD

BRAUN



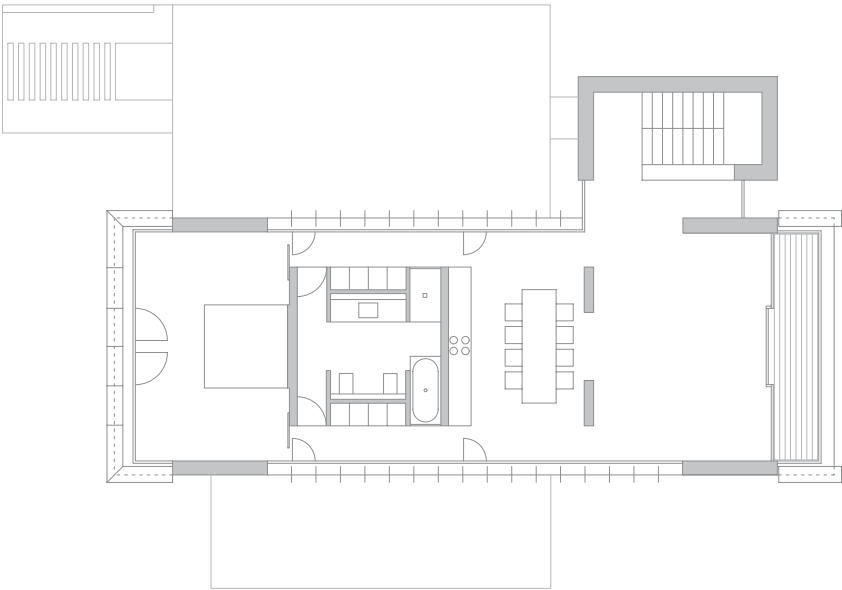
PROJECT FACTS

Address: Westpreussenstrasse, 31275 Lehrte, Germany. Builder-owner: Detlef Klose. Completion: 2004.
Construction sum: 175,000 €. Gross floor area: 397 m². Gross volume: 864 m³.



Residential Building

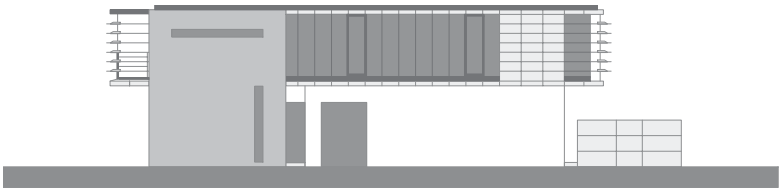
Infill development within existing building, Lehrte



↖ | **Facade.** **FLOOR:** architectural concrete as in-situ concrete, pigmented charcoal gray. **WALLS:** glass facade with translucent all-glass slats mounted in front. **CEILING:** architectural concrete ceiling with non-bearing prefabricated architectural concrete units, pigmented charcoal gray.
↑ | **Dining area.** **FLOORS:** industrial oak parquet, oiled, by Bembé, matt sealed decorative floor screed. **WALLS:** architectural concrete as in-situ concrete. **CEILING:** architectural concrete ceiling with integrated lighting. **OBJECTS:** custom-designed table and chairs. **LIGHTING:** ceiling downlights and pendant light fittings, custom-designed.

← | **Upper floor plan**
➤ | **View from the street.** **FLOORS:** charcoal pigmented architectural concrete with integrated uplights by Kreon. **WALLS:** charcoal pigmented prefabricated architectural concrete units, glass facades with translucent vertical and horizontal slats mounted in front. **CEILING:** architectural concrete ceiling with non-bearing prefabricated architectural concrete units, pigmented charcoal gray.
→ | **Staircase.** **WALLS:** lime-cement plaster painted matt white, prefabricated architectural concrete units, all-glass unit with hidden profiles by Schüco. **CEILING:** architectural concrete ceiling as in-situ concrete, all-glass overhead glazing. **OBJECTS:** sideboard as balustrade, MDF painted charcoal gray, custom-designed.





↑ | **View from south**
← | **Shower.** **FLOORS:** 5 x 5 cm mosaic tiles, Pro Architectura by Villeroy & Boch. **WALLS:** 5 x 5 cm mosaic tiles, Pro Architectura by Villeroy & Boch, architectural concrete as in-situ concrete, impregnated, all-glass pane, frosted. **OBJECTS:** fittings by Vola. **CEILING:** architectural concrete as in-situ concrete with integrated downlight, custom-designed.
↓ | **Washstand.** **FLOORS:** 5 x 5 cm mosaic tiles, Pro Architectura by Villeroy & Boch. **WALLS:** 5 x 5 cm mosaic tiles, Pro Architectura by Villeroy & Boch, architectural concrete as in-situ concrete. **CEILING:** architectural concrete as in-situ concrete. **OBJECTS:** washstand – prefabricated architectural concrete top, impregnated, full drawers of MDF, painted charcoal gray, custom-designed, fittings by Vola, undermount sink, Vero by Duravit, E2 switch range, charcoal gray by Gira, frameless mirror.

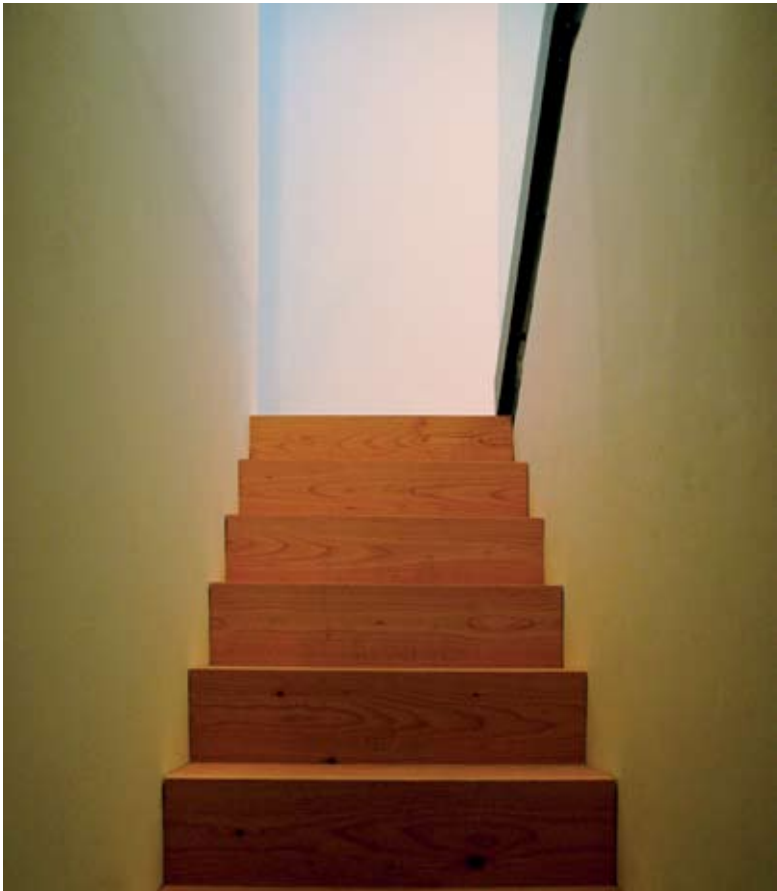


↑ | **Sleeping area.** **FLOORS:** industrial oak parquet, oiled, by Bembé. **WALLS:** architectural concrete as in-situ concrete. **OBJECTS:** MDF-surfaced sliding door, pigmented charcoal gray, custom-designed pocket grip. **CEILING:** architectural concrete as in-situ concrete.
← | **Staircase.** **FLOORS:** architectural concrete as in-situ concrete. **WALLS:** lime-cement plaster painted matt white. **CEILING:** architectural concrete as in-situ concrete. **OBJECTS:** steel handrail painted charcoal gray. **LIGHTING:** flush-mounted batten light fitting by RZB.





Address: Elbchaussee, Hamburg, Germany. **Builder-owner:** collective ownership. **Completion:** 2007. **Construction sum:** 300,000 €. **Gross floor area:** 278 m² new building. **Gross volume:** 1,065 m³ new building.



Conversion of a Villa

Sublime completion

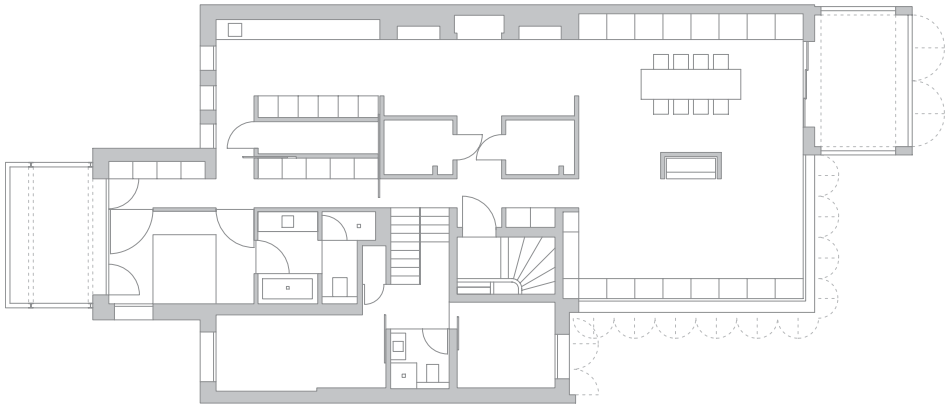
↖ | **Split-level stairway.** **FLOORS:** oiled Douglas fir floorboards by Dense. **WALLS:** lime-cement plaster painted matt white, all-glass balustrade mounted on a charcoal gray steel structure. **CEILING:** suspended plasterboard ceiling painted matt white.

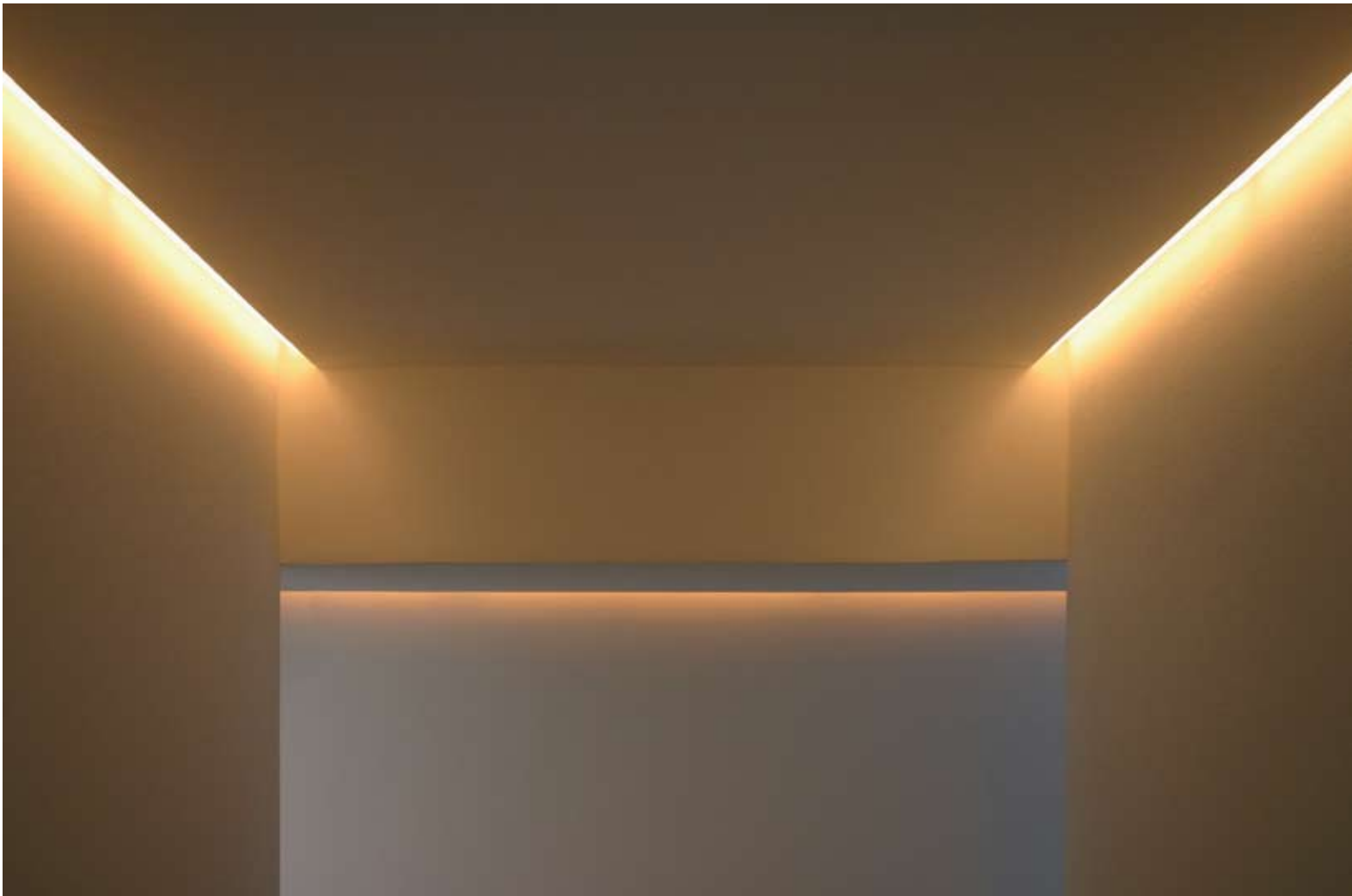
↑ | **Living and dining area.** **FLOORS:** oiled Douglas fir floorboards by Dense. **WALLS:** lime-cement plaster painted matt white. **CEILING:** suspended plasterboard ceiling painted matt white. **BENCH:** prefabricated architectural concrete units on a steel substructure, underlighting with batten light fittings, RZB.

← | **Floor plan, top floor**

➤ | **View from the street.** **FACADE:** architectural concrete beams and supports as in-situ concrete, transparently impregnated. **CURTAIN WALL:** all-glass doors by Dorma, aluminum windows, painted charcoal gray, by Schüco, solar protection glazing by Interpane, sheet aluminum roof edge and cornice covers, painted charcoal gray.

→ | **Fireplace.** **FLOORS:** oiled Douglas fir floorboards by Dense. **WALLS:** lime-cement plaster painted matt white, fireplace insert and trim by Spartherm, painted charcoal gray. **CEILING:** suspended plasterboard ceiling painted matt white. **BENCHES:** plasterboard on aluminum substructure, painted matt white.





↑ | **Stairway area.** **WALLS:** lime-cement plaster painted matt white. **CEILING:** suspended plasterboard ceiling painted matt white with integrated slots for batten light fittings. **LIGHTING:** batten light fittings by RZB.
← | **Bath.** **FLOORS:** porcelain stoneware tiles, 60 x 60 cm, by Iris Ceramica. **WALLS:** porcelain stoneware tiles, 60 x 60 cm by Iris Ceramica, radiator by Zehnder, painted matt white. **CEILING:** suspended plasterboard ceiling painted matt white with integrated slots for batten light fittings. **LIGHTING:** batten light fittings by RZB, downlights by kreon. **OBJECTS:** toilet and bathtub by Duravit, fittings by Vola.



↑ | **Southwest view**
← | **Dressing room:** **FLOORS:** oiled Douglas fir floorboards by Dense. **WALLS:** lime-cement plaster painted matt white. **WALL PLATE:** plasterboard on aluminum substructure, painted matt white, built-in cupboards of MDF, painted matt white, custom-designed. **OBJECTS:** frosted all-glass doors by Dorma, matt polished stainless steel grab bars, custom-designed, aluminum glass door, painted charcoal gray, by Schüco. **CEILING:** suspended plasterboard ceiling painted matt white. **LIGHTING:** downlights by Kreon.
↓ | **Kitchen.** **FLOORS:** oiled Douglas fir floorboards by Dense. **WALLS:** lime-cement plaster painted matt white. **CEILING:** suspended plasterboard ceiling painted matt white, plasterboard ceiling joist for hidden batten light fittings. **BUILT-IN UNITS:** kitchen of MDF painted matt white, custom-designed, stove top by Siemens, frameless mirror. **OBJECTS:** E2 switch range, matt white, by Gira. **LIGHTING:** batten light fittings by RZB, wall spotlights by kreon.

